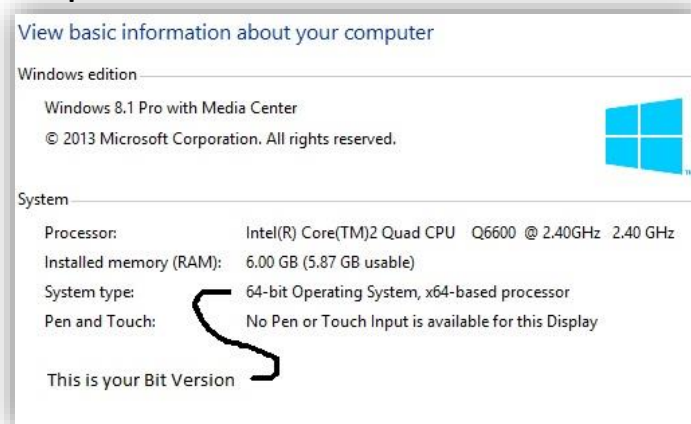


Patient Interface Installation

Setup for WPF Devices:

- ❑ Login to <https://admin.health-mirror.net/>.
- ❑ Underneath Patient Interface Installers, you have **Windows 32 bit** and **Windows 64 bit**.
- ❑ Find your Bit version.
 - For **Windows 7** and below, click on the Start Button and right-click the **My Computer** Icon, go to **Properties**. The window that pops up will display four categories. Under System, System Type it will say your Bit Version (32 or 64).
 - For **Windows 8**, click on the Start/Windows Key and type in the open space **This PC**, right-click the Icon and go to **Properties**.
 - For Experimental **Windows 10** Builds, locate the **File Explorer** Icon at the bottom of the Desktop, open it and right-click the **This PC** Icon, go to **Properties**.



- ❑ Once you know your Bit Version, select the appropriate link under Patient Interface Installers to download the installer. Run the installer when it is finished downloading.
- ❑ A EULA Agreement will appear, click **Accept**.
- ❑ A User Account Control pop-up might appear, select **Yes**.
- ❑ The Application Install pop-up will appear, select **Install**.
- ❑ Once the install is finished, the Health Mirror application will show. It will prompt "Are you using a touchscreen?" Selecting Yes will disable external keyboards (limiting users to use the onscreen keyboard). Selecting No will allow use of external keyboards (touchscreen devices will remain enabled)
- ❑ For the Username and Password, you can use any User's credentials from within the same Practice.
- ❑ For the Mirror ID, go back to the administration site as an admin, go to **Practices**, find the Practice that you are installing this mirror into, and click **Manage** next to it. Go to **Manage Site** at the top, select the Edit (Green Square) Icon next to the

Site. Under Mirror Details, it lists the Mirror ID's. Copy the ID for whichever Mirror you are using and enter it on the WPF Mirror Device and click **Log-in**.

Setup for Android Devices

- Turn on the Tablet and go to the Play Store.
- Under Apps, type in Health Mirror Patient Education, select the Health Mirror Patient Education app and **Install**.
- Note:** Some tablets may not allow Google Play Store to be installed. For this, go to <https://admin.health-mirror.net/> on the tablet, sign-in as admin, click on **Android App Installer** under **Patient Interface Installers**, and download the **.apk file**. Once the file is downloaded, run it.
- It will ask for permission, click **Allow/Accept**.
- Once it has been installed, launch the **Health-Mirror App**.
- For the Username and Password, you can use any User's credentials from within the same Practice.
- For the Mirror ID, go back to the administration site as an admin, go to **Practices**, find the Practice that you are installing this mirror into, and click **Manage** next to it. Go to **Manage Site** at the top, select the Edit (Green Square) Icon next to the Site. Under Mirror Details, it lists the Mirror ID's. Copy the ID for whichever Mirror you are using and enter it on the Android Mirror Device.
- Click **Log-in**, this will bring up the Health-Mirror Application on the Android Device.

Setup for Apple Devices (Make Sure You Have an IPAD 2 or Above):

- Turn on the IPad, go to the browser Safari, and go to <https://admin.health-mirror.net/>, sign-in as admin.
- Under **Patient Interface Installers**, click on **IPad (2 and up)**.
- A pop-up will appear saying to install the Health-Mirror app, click **Install**.
- A second pop-up will appear saying to trust this app, click **Trust**.
- Your device will install the App, then go back to the IPad home screen and click on the **Health Mirror App**.
- For the Username and Password, you can use any User's credentials from within the same Practice.
- For the Mirror ID, go back to the administration site as an admin, go to **Practices**, find the Practice that you are installing this mirror into, and click **Manage** next to it. Go to **Manage Site** at the top, select the Edit (Green Square) Icon next to the Site. Under Mirror Details, it lists the Mirror ID's. Copy the ID for whichever Mirror you are using and enter it on the Apple Mirror Device.
- Click **Log-in**, this will bring up the Health Mirror Application on the Apple Device.
- To lock-down or restrict other app access, please go to our Health Mirror Portal at <http://helpdesk.health-mirror.com/kb/a2/how-to-lock-down-an-ipad-app.aspx>.

Patient Interface Walkthrough

- The first time you setup a mirror device, the center of the app will be black. A message stating that, there is currently no content to display, will appear. Touch/Click the red **X** button to the right to remove the message.
- If you haven't already done so; go back in this document to, Section 2- Staff Interface, Assigning Content, and assign content to this mirror device. Once you send over content, your display will inform you that it has received the content.
- It will automatically start to display each category on the screen.
- You can use the **Play, Stop, Previous, Pause, Mute, Next**, and **Volume** slider for pictures and videos.
- You also have the option to disable/dim the app by selecting the **Press to Disable** button in Orange at the top-left side of the screen. This will stop any playing media and dim the screen. Press the same button to re-enable the mirror.
- On the right-side, you have a **Send to Me** button. If you select this, you are able to send this education to the patient via **Email** or **QR Code**.
- If you need to log-out of the Mirror, click and hold on the **Health-Mirror Logo** on the top-left side of the screen for 3 seconds and release. You will get a pop-up with the following options, (Log out, Enable Keyboard Mode, Update Login Credentials) select Log Out to log-out. Entering the credentials of any users in the practice will exit the application.